

World class Hi-Fi made in England



First Edition

## PLANAR 1

This multi-award winning 'Plug and Play' design utilises our handmade RB110 tonearm. With our pre-set bias and a factory fitted Carbon cartridge, set-up is possible in under 30 seconds and delivers incredible performance well beyond its price tag.

---

Available in gloss:  
White or black.



## PLANAR 2

Beautifully simple to set up, the Planar 2 is built on our stunning acrylic skin plinth. Featuring the hand made RB220 tonearm, low noise motor and 10mm glass platter with a factory fitted Carbon cartridge. Stunning performance guaranteed straight out of the box.

---

Available in high-gloss:  
White, black or red.



## PLANAR 3

The iconic Planar 3 returns fitted with the handmade RB330 tonearm. Carrying just two components over from the previous model. Engineered to bring your music to life, a serious performer and a must for demonstration.

---

Available in high-gloss:  
White, black or red.



## TURNTABLES

---

## PLANAR 6

The Planar 6 is constructed around a unique ultra-light foam core plinth and HPL laminates. It is designed to deliver a level of performance beyond anything at this price. The Planar 6 features the RB330 tonearm and a dual layer float glass platter. The Neo turntable power supply provides convenient speed selection, advanced anti-vibration control, and electronic fine speed adjustment, a feature only found on the RP10 until now.



## RP8

Built around our radical skeletal foam core plinth the RP8 was voted "one of the best designs of all time" by two of the worlds most respected designers, Apple's Sir Jony Ive and Marc Newson, this ground breaking turntable takes Rega's design philosophy to the next level. Supplied with a custom matched TT-PSU and the RB808 tonearm as standard.



## RP10

Rega's design philosophy extends further than ever before with advanced components built around our radical new plinth design. Featuring the RB2000 tonearm, a ceramic flywheel effect platter and the custom RP10 power supply ensuring total control over both motor vibration and speed. This technology guarantees to deliver the highest level of performance from a Rega turntable, to date.



For the full product range please visit [www.rega.co.uk](http://www.rega.co.uk)

## RB78, CARBON, BIAS 2, ELYS 2 AND EXACT

Rega offers a unique selection of cartridges. A complete range of moving magnets and three moving coils. All of which are hand built (excluding the Carbon) by our highly trained technicians to the tightest tolerance.



CARTRIDGE RANGE

---

## ANIA (MC)

The Ania was designed to complement the Planar 3 and Planar 6 turntable models. Housed in a unique PPS ultra-rigid body, the Ania shares the same highly complex, hand-wound micro coil and magnet assembly found in the more expensive models. Using an aluminium cantilever mounted with an elliptical profile stylus, the Ania delivers a balanced and dynamic performance which will bring a new dimension to your vinyl collection.



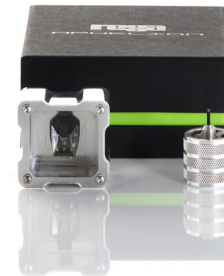
## APHETA 2 (MC)

Housed in a custom body machined from a single piece of aluminium, the Apheta 2 uses an aluminium cantilever and 'Vital' profile, solid diamond stylus. This assembly is coupled with a super high-powered neodymium magnet, and our micro coil, meticulously hand wound on an iron cross that is fifty percent smaller than the original design. This coil weight reduction allows greater freedom to track the vinyl groove ensuring even more detail is extracted from the vinyl.



## APHELION (MC)

The Aphelion is the ultimate in micro engineering and design. Our unique hand-wound micro cross and coil assembly is built directly onto a Boron rod cantilever. The 'Vital' profile diamond is then mounted through 90 degrees which offers extreme levels of stiffness and control over the stylus. This design requires a 'zero tolerance' approach to engineering to achieve the highest level of performance from a Rega cartridge to date.



For the full product range please visit [www.rega.co.uk](http://www.rega.co.uk)

## ATLAS

The Atlas is a premium tracking force gauge designed to provide reliable and accurate measurement whilst optimising set-up of your cartridge and tonearm. Inside the durable aluminium casework is a highly stable loadcell and precision amplification circuitry. There is also a custom designed front guard to protect the measuring element and provide easy alignment during use.



## NEO

Using the same DSP (digital signal processing) generator found in the RP10, the Neo turntable power supply is built upon a high stability crystal. The Neo features an advanced anti-vibration circuit, fine motor speed adjustment and the convenience of electronic speed change. The DSP generator will divide the accurate signal from the crystal to the exact frequency required to turn the platter at the selected speed whilst producing a near perfect sinusoidal waveform to drive the 24V motor.



## FONO MINI A2D MM

The Fono Mini A2D is a high-quality phono pre-amplifier for use with any moving magnet cartridge. The addition of a USB interface allows you to easily transfer vinyl to your PC if required. The Fono Mini A2D amplifier offers exceptional performance and incredible value for money and promises to be a valuable addition to any hi-fi set up.



## ACCESSORIES AND PHONO STAGES

---

## FONO MM

The Fono MM is a compact high specification moving magnet phono stage. The Fono MM uses a fully discrete, cascaded, complementary amplifier input stage, a configuration designed to optimise the performance of your moving magnet cartridge. Now housed in a brand-new case styled to match our latest range of electronic components.



## FONO MC

The Fono MC is an exceptionally high-quality moving coil phono stage designed to maximise the potential of any MC cartridge. Engineered to complement our latest Rega range of moving coils, you will find full adjustability for loading and two different gain settings conveniently located on the rear panel, making the Fono MC the ideal companion for almost any MC cartridge.



## ARIA MM / MC

Housed within our half width custom designed case are two entirely separate, high performance phono stages. One fully adjustable, dedicated moving coil and one moving magnet. Both stages have their own separate input sockets and input pre-amplifier circuitry. This enabled us to design bespoke input circuitry for each cartridge type without compromises, offering an exceptional level of performance and flexibility for both styles of cartridge.



---

For the full product range please visit [www.rega.co.uk](http://www.rega.co.uk)

## BRIO

The Brio offers 65 W per channel into 6  $\Omega$  and a completely new case to house its improved circuits and parts. It now sits in a fully aluminium two-part case which boosts the Brio's heat sinking capabilities. The new Brio has a cleverly integrated headphone socket specially designed to avoid interference with the audio circuit and as you would expect from Rega, a very high specification moving magnet phono stage is built in as standard.



## ELEX-R

The Elex-R is a sublime blend of the Brio design, delivering 90 W per channel into 6  $\Omega$ , with the power circuits and advanced phono stage of the Elicit-R. Rega's engineers have achieved the perfect balance of power, control and dynamics, delivering a performance that puts the music first.



## AMPLIFIERS

---



## ELICIT-R

Providing 127 W per channel into 6  $\Omega$ , you will never be short of power. The Elicit-R will drive even the most difficult loads with ease and incorporates a high quality MM phono stage input which can be switched to a line level input if so desired. You will find multiple inputs available on the rear panel for perfect integration into any system. A must for demonstration.



## OSIRIS

The Osiris is the culmination of more than three decades of experience in solid-state amplifier development. A no compromise, super high-performance amplifier delivering 162 W into 8  $\Omega$ . A dual mono amplifier housed in a custom Rega CNC machined aluminium case. Designed around "minimalist" high gain power amplifier and "passive pre-amplifier" circuit topology, the Osiris offers unrivalled performance and build quality.



---

For the full product range please visit [www.rega.co.uk](http://www.rega.co.uk)

## APOLLO

The Apollo CD player utilises Rega's own custom chipset and software offering a truly unique level of performance for a CD player. Development of the analogue, digital and control domains ensured direct improvements of both analogue and digital outputs, making the Apollo a perfect partner for the Rega Brio amplifier and an ideal 'CD format' front-end for the Rega DAC.



## SATURN-R

The Saturn-R CD-DAC is essentially two products in one, a high specification CD transport and an independent DAC circuit offering the highest possible resolution up to and including 24Bit-192kHz. The Saturn-R has two optical inputs, two Co-Axial inputs, a fully asynchronous USB and an added 'direct' digital output from the CD playback section ensuring perfect integration into any audio system.



CD PLAYERS AND DAC

---

## RX LOUDSPEAKER RANGE

The RX loudspeaker range is presented in premium cabinets, finished with a selection of high quality, real wood veneers. Rega loudspeakers all utilise our own hand-made custom mid drivers, bass units, and ZRR high frequency units. This unique driver array delivers a natural high frequency, with tight controlled bass and exceptional mid-range to deliver a perfectly balanced and musical performance every time.



\*Speaker stand not included.

RX-3



RX-1\*

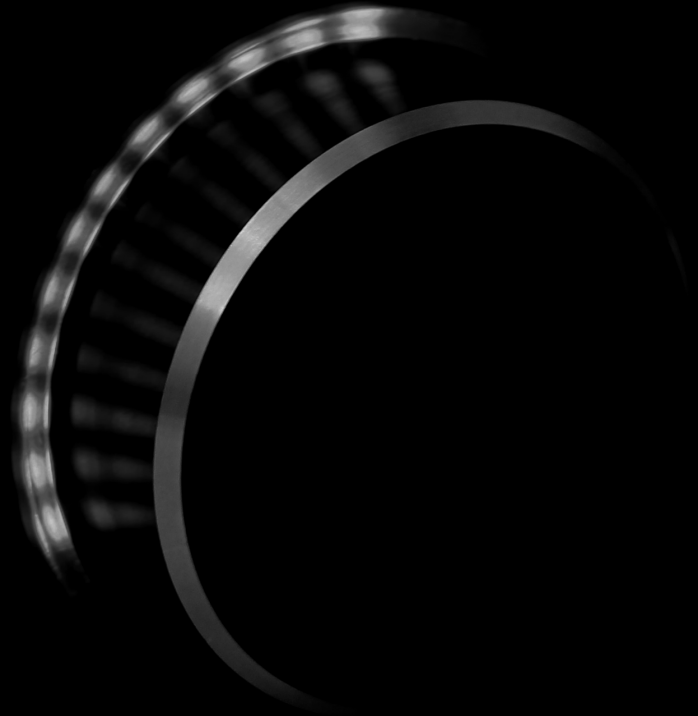


RX-5



## LOUDSPEAKERS

For the full product range please visit [www.rega.co.uk](http://www.rega.co.uk)



Rega Research Ltd. 6 Coopers Way Temple Farm Industrial Estate Southend-on-Sea Essex SS2 5TE  
For the full product range please visit [www.rega.co.uk](http://www.rega.co.uk) | Follow us on twitter @RegaResearch