



S U M I K O

S U B W O O F E R S



S.10



Type: Passive radiator.

Active Unit:

12 in, 320mm very long throw, fiberglass sandwich construction honeycomb, down-firing woofer, cast aluminum chassis.

Passive Radiator:

12 in, 320mm very long throw, fiberglass sandwich construction honeycomb.

Lower Frequency Response:

-6dB/-3dB at 22/30 Hz.

Input Connectors:

Hi Level Neutrik Speakon; Lo Level phono; LFE phono
RF signal

Power Output:

500 Watts (RMS), 1 kW peak

Crossover:

Continuously variable (30 to 120Hz)

Phase Switch: Yes, 0 or 180 degrees

Amplifier Type: High linearity Class D

RF receiver sensitivity -90 dB

RF link coverage 10m indoor range

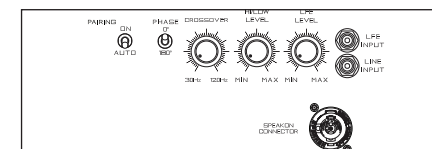
Dimensions (WxHxD):

15.7x17.5x17.7 in; 400x445 x450 mm

Weight: 64 lbs (29 Kg)-net weight;

Finish:

Gloss Piano Black or White Lacquer



S.9



Type: Passive Radiator.

Active Unit:

10 in, 260 mm long-throw, steel chassis down-firing active woofer.

Passive Radiator:

10 in, 260 mm

Lower Frequency Response:

25 Hz at -3 dB

Input Connectors:

Hi Level Neutrik Speakon; Lo Level phono; LFE phono

Power Output: 350 Watts (RMS)

Crossover:

Continuously variable (30 to 120Hz)

Phase Switch: Yes, 0 or 180 degrees

Amplifier Type: Class AB

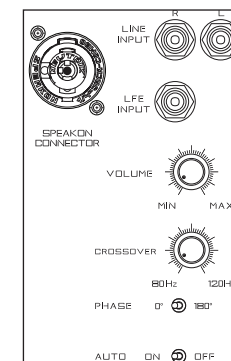
Dimensions (WxHxD):

14x15.9x16.2 in; 355x405x411mm

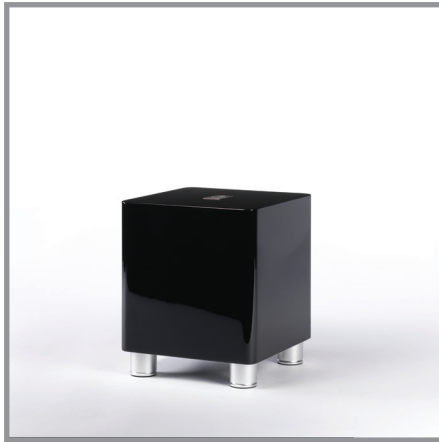
Weight: 46.2 lbs (21 Kg) -net weight;

Finish:

Gloss Piano Black or White Lacquer



S.5



Type: Closed Box.

Active Unit:

8 in, 210 mm long-throw, steel chassis
down-firing active woofer.

Lower Frequency Response:

40 Hz at -3 dB

Input Connectors: Hi Level Neutrik

Speakon; Lo Level phono; LFE phono

Power Output: 150 Watts (RMS)

Crossover:

Continuously variable (30 to 120Hz)

Phase Switch: Yes, 0 or 180 degrees

Amplifier Type: Class AB

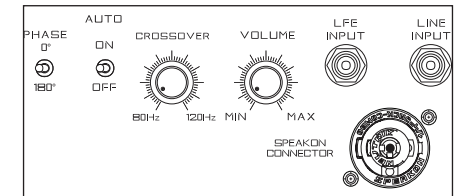
Dimensions (WxHxD):

11.2x13.2x12.4 in; 285x335x315mm

Weight: 30.8 lbs (14 Kg) -net weight;

Finish:

Gloss Piano Black or White Lacquer



S.0



Type: Closed Box.

Active Unit:

6.5 in, 165 mm long-throw, steel chassis
down-firing active woofer.

Lower Frequency Response:

45 Hz at -3 dB Input

Connectors:

Hi Level Neutrik Speakon;
Lo Level phono; LFE phono

Power Output: 120 Watts (RMS)

Crossover:

Continuously variable (30 to 120Hz)

Phase Switch: Yes, 0 or 180 degrees

Amplifier Type: Class AB

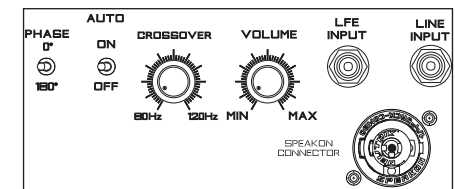
Dimensions (WxHxD):

9.65x10.8x11 in; 245x275x280 mm

Weight: 20.3 lbs (9,2 Kg) -net weight;

Finish:

Gloss Piano Black or White Lacquer



WTX



RF output power: +3 dBm

RF link coverage: 10m indoor range

Inputs 1 high level:
(4 pole Speakon® connector)
1 low level (single phono plug),
1 LFE (single phono plug)

Input Impedance High level:
10k Ohm

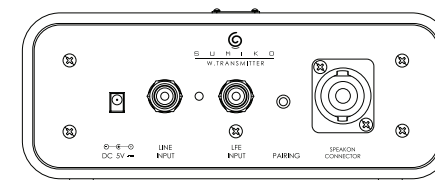
Low level: 1k Ohm

Power consumption:<0.5 Watts

Finish: Black lacquered

Dimensions (WxHxD):
7x2.7x6.7 in; 180x70x170 mm

Weight: 2.86 lbs (1.3 kg)



WRX



RF sensitivity: -90 dB

RF link coverage: 10m indoor range

Outputs:
1 low level (single phono plug),
1 LFE (single phono plug)

Output Impedance: <1k Ohm

Power consumption: <0.5 Watts

Finish: Black lacquered

Dimensions (WxHxD):
7x2.7x6.7 in; 180x70x170 mm

Weight: 2.86 lbs (1.3 kg)

